



2022 Northland O'pen Cup

1st-2nd October 2022

The Organising Authority is the
Taipa Sailing Club

59 Taipa Point Road, Taipa 0420

SAILING INSTRUCTIONS

NB: The notation '[DP]' in a rule in the Sailing Instructions means that the penalty for a breach of that rule may, at the discretion of the protest committee, be less than disqualification.

1 RULES

See NoR 1.

2 NOTICES TO COMPETITORS

Notices to competitors will be posted on the official notice board inside the front door of Taipa Sailing Club

3 CHANGES TO SAILING INSTRUCTIONS

Any change to the sailing instructions will be posted before 0900hrs on the day it will take effect, except that any change to the schedule of races will be posted by 1800hrs on the day before it will take effect.

4 SIGNALS MADE ASHORE

4.1 Signals made ashore will be displayed on the flagstaff at the front of Taipa Sailing Club

4.2 A boat shall not go afloat until flag D is displayed ashore. The warning signal will not be made before the scheduled time or less than 15 minutes after flag D is displayed. [DP]

5 SCHEDULE OF RACES/CLASS FLAGS

5.1 Dates of racing:

Date	Time	Event
Saturday 1st October	0800-1000	Registration
	1000	Welcome, Introductions & Briefing
	1100-1230	On Water Session 1 (Points Racing)
	1230-1330	On shore Lunch & Competitor Bonding
	1330-1500	On Water Session 2 (Points Racing)
Sunday 1 May	0900	Daily Briefing
	1100-1230	On Water Session 3 (Points Racing)
	1300-1500	On Water Fun Activities (Non-Points)
	ASAP after racing	Prize Giving

The Development Fleet will have a separate briefing starting at the time stated above.

5.2 FLEETS

- (a) There is provision for up to three fleets (Silver, Gold and Development) depending on entry numbers. Where the entry number are less than 40, Gold and Silver will start together. For in excess of 40 entries, Gold and Silver fleets will start in their own Fleet.
- (b) Competitors shall nominate which fleet they want to sail in. The organising authority will then set the fleets in association with the Class Association to ensure sailors are in a fleet of equal ability.
- (c) The **Gold** fleet will be made up of the more experienced sailors that have raced at least five events before. The **Silver** fleet will be made up of sailors who have raced in less than five events and will have a similar, but shortened, course with coaching assistance throughout racing. The **Development fleet** will be made up of those sailors new to racing and less experienced than the Silver Fleet.
- (d) A competitor cannot change fleets unless approved by both the Organising Authority

and Race Committee.

5.3 FLEET FLAGS

<i>Fleet</i>	<i>Flag</i>
Gold Fleet	White flag with O'pen Skiff insignia
Silver Fleet	Pink flag with O'pen Skiff insignia
Combined Fleet (if sailed as one fleet)	White flag with O'pen Skiff insignia
Development Fleet	To be advised at Briefing

5.4 On the last scheduled day of racing no warning signal will be made after 1500hrs.

6 RACING AREAS

Addendum 1 shows the location of the primary racing area.

7 THE COURSES

7.1 The diagrams in Addendum 2 show the indicative courses that will be sailed, the order in which marks are to be passed, and the side on which each mark is to be left. All short courses and any long race sailed are point's races. The Courses to be sailed for each day, and any changes to marks or Race Committee vessels will be described at the daily briefing (refer to SI 5.1).

7.2 Adventure and Combined Races.

These events may be included but are not limited to an adventure race and other non scoring races that may involve two-up (two person) sailing. THESE RACES DO NOT COUNT TOWARDS THE OVERALL POINT SCORE, but there may be spot prizes awarded. These races will also be made up of both the Gold, Silver and Development Fleets Sailing together.

7.3 Development Fleet.

The courses, marks, starts and finishes for the development will be advised at the briefing. Sailing Instructions 8, 9, 10, 11, 12, 13 and 14 do not apply to the Development Fleet.

8 MARKS

8.1 The Marks are as follows:

Marks	Description
Start and Finish Boat	30ft white keelboat
Start Pin	Pink Teardrop buoy
Finish Pin	Pink Teardrop buoy
All other Marks	Pink Teardrop buoy

8.2 A race committee vessel signalling a change of a leg of the course is a mark as provided in SI 10.2.

9 STARTS

9.1 To alert boats that a race or sequence of races will begin soon, the orange starting line flag will be displayed with one sound at least **two** (2) minutes before the warning signal is made.

9.2 Races will be started with the warning signal made **three** (3) minutes before the starting signal. This changes RRS 26.

<i>Minutes before starting signal</i>	<i>Visual Signal</i>	<i>Sound Signal</i>	<i>Means</i>
3	Class Flag	One	Warning Signal
2	Preparatory flag	One	Preparatory signal
1	Preparatory flag removed	One long	One minute
0	Class Flag removed	One	Starting signal

9.3 The starting line will be between an orange staff displaying an orange flag on the Race Committee Boat at the starboard end, and the port end starting mark.

10 CHANGE OF THE NEXT LEG OF THE COURSE

10.1 To change the next leg of the course, the race committee will move the original mark (or the finishing line) to a new position.

10.2 Except at a gate, boats shall pass between the race committee vessel signalling the change of the next leg and the nearby mark, leaving the mark to port and the race committee vessel to starboard. This changes RRS 28. The Boat signalling the change will be displaying Code Flag "C" and making many sound signals.

11 THE FINISH

11.1 The finishing line will be between an orange staff displaying a blue flag on the Race Committee Boat and the port end finishing mark.

12 PENALTY SYSTEMS

12.1 RRS 44.1 is changed so that the Two-Turns Penalty is replaced by a One-Turn Penalty.

13 TIME LIMITS, TARGET TIMES & FINISHING WINDOW

13.1 Time limits and target times are as follows:

<i>FLEET</i>	<i>TARGET TIME</i>	<i>FINISH WINDOW</i>	<i>TIME LIMIT</i>
<i>GOLD</i>	<i>25 MINS</i>	<i>15 MINS</i>	<i>40 MINS</i>
<i>SILVER</i>	<i>25 MINS</i>	<i>15 MINS</i>	<i>40 MINS</i>

13.2 The target time for the first boat to sail the course in any division is 25 minutes.

13.3 The Finishing window shall be 15 minutes for boats to finish after the first boat sails the course and finishes. Boats failing to finish within the Finishing Window, and not subsequently retiring, penalised or given redress, will be scored Time Limit Expired (TLE) without a hearing. A boat scored TLE shall be scored points for the finishing place one more than the points scored by the last boat that finished within the Finishing Window. This changes RRs 35, A5.1, A5.2 and A10.

14 SCORING

14.1 ONE (1) race are required to be completed to constitute a series.

14.2 Number of races excluded from the series score (drops)

- a) When fewer than six (6) races have been completed, a boat's series score will be the total of her race scores.
- b) When six (6) to eight (8) races have been completed, a boat's series score will be the total of her race scores excluding her worst score.
- c) When nine (9) or more races have been completed, a boat's series score will be the total of her race scores excluding her two worst scores.

15. PROTESTS AND REQUESTS FOR REDRESS.

15.1 All protests to be decided on the water

16 SAFETY REGULATIONS

16.1 Boats not leaving the shore for a scheduled race shall promptly notify the race office.

16.2 Before leaving the shore all competitors shall report to the Ramp Master. When returning to the shore the all competitors shall immediately report to and receive acknowledgement from the Ramp Master. [DP]

16.3 A boat retiring from racing shall notify the Race Committee before leaving the racing area, or if that is not possible, shall notify the Race Office as soon as possible after returning ashore. [DP]

17 EVENT ADVERTISING

Further to NoR 2.1, boats shall display event advertising supplied by the organising authority if requested at registration.

18 OFFICIAL BOATS

Official boats will be identified at the first briefing.

19 SUPPORT BOATS [DP]

19.1 Coach and support boats shall be deemed to be “Event Support Boats” and may enter the course area for the purpose of coaching and support. Such boats shall have a working VHF capable of receiving channels 77 and 17 in order to follow any instructions of the Race Officer or Race Management personnel. Consideration must be given to not leaving wakes for yachts to sail through and disturbing the wind near marks.

19.2 Attention is drawn to the relevant local council bylaws. In addition to this, PFDs must be worn by all support boat skippers and crew at all times when afloat.

19.4 When flag V (with a long sound signal) is displayed on a committee boat all support boats are requested to remain afloat and assist all sailors.

20 PRIZES

20.1 Prizes will be given as follows:

Sportsmanship Award:

Awarded in recognition of qualities such as Sportsmanship, Perseverance, Assistance to Others, Positive Attitude.

20.2 Prizes will be awarded at the discretion of the Organising Authority.

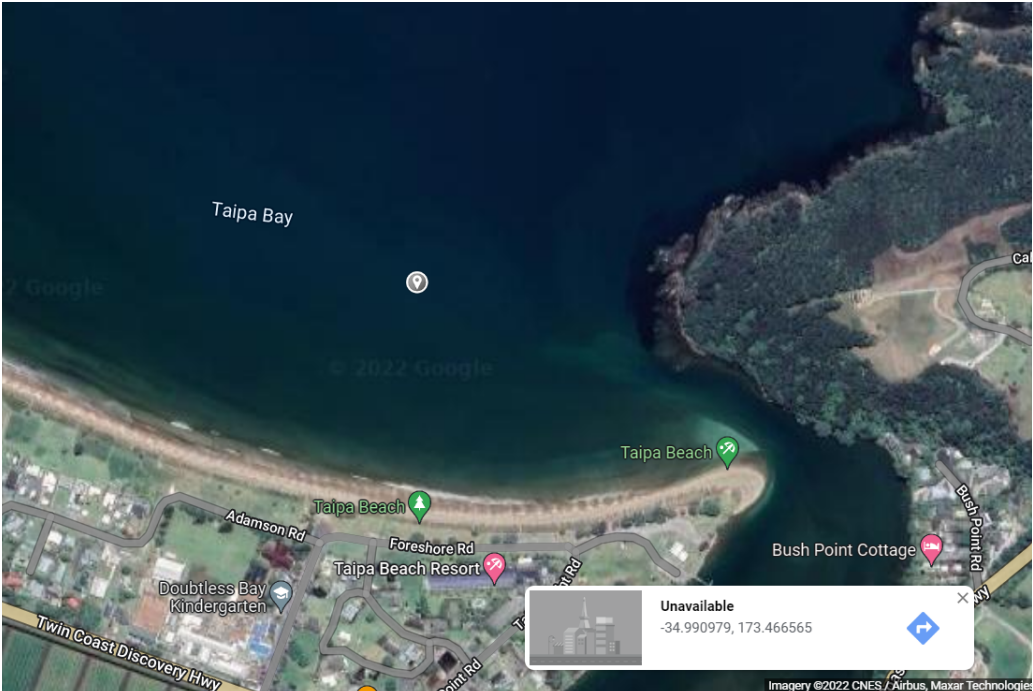
21 INSURANCE

See NoR 13.

22 DISCLAIMER OF LIABILITY

The responsibility for a boat's decision to participate in a race or to continue to race is hers alone. Refer to RRS 3. By participating in this event each competitor agrees and acknowledges that sailing is a potentially dangerous activity with inherent risks. These risks include strong winds and rough seas, sudden changes in weather, failure of equipment, boat handling errors, poor seamanship by other boats, loss of balance on an unstable platform and fatigue resulting in increased risk of injury. Inherent in the sport of sailing is the risk of permanent, catastrophic injury or death by drowning, trauma, hypothermia or other causes.

Addendum 1 Racing Area



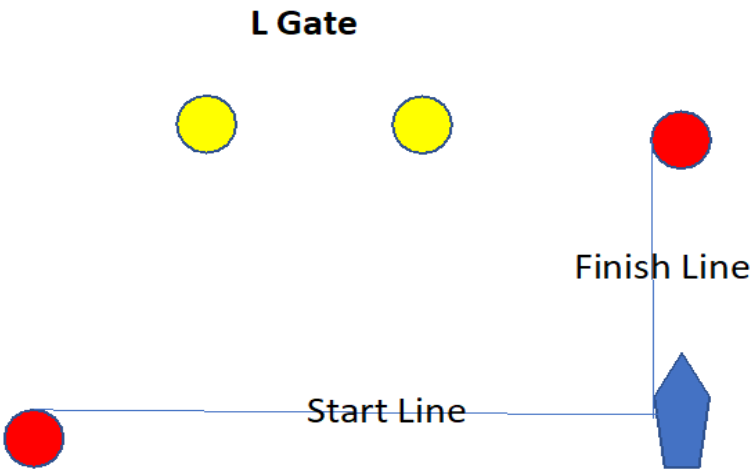
Primary
Racing Area

Addendum 2

Course 1

Windward/Leeward with a Reaching Finish

Course 1

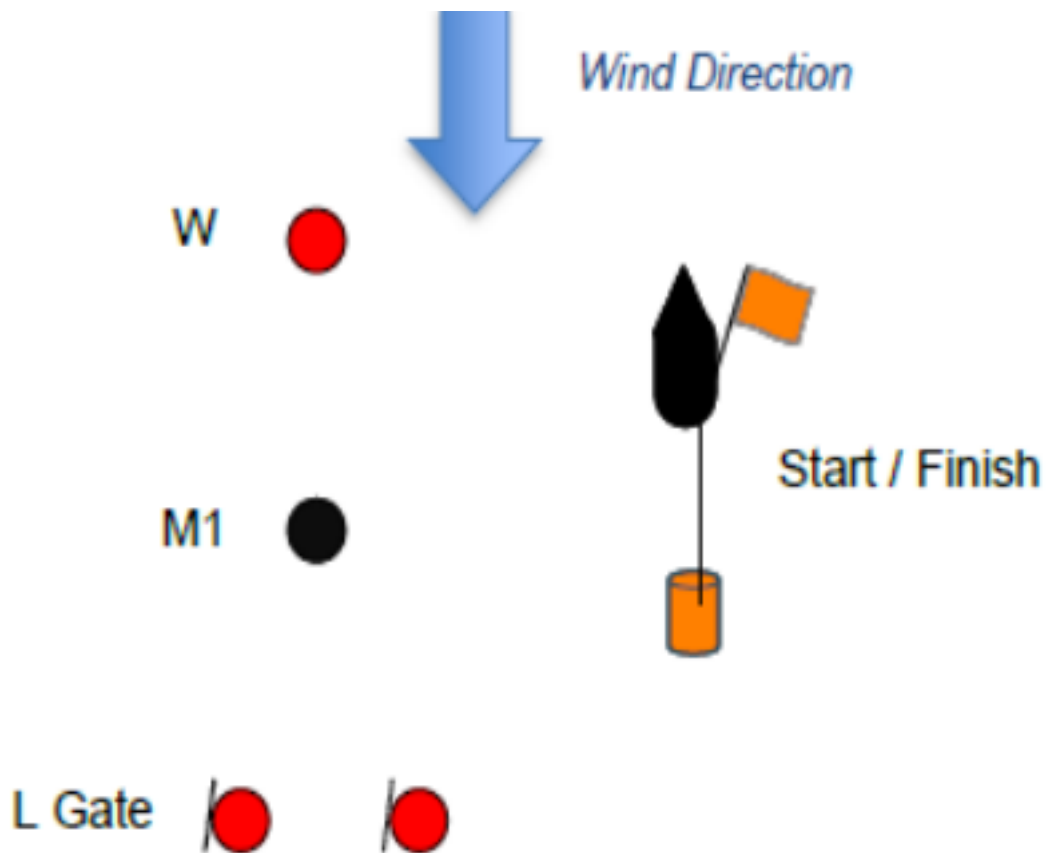


Gold Fleet: Start – W(p) – L Gate (p/s) – W (p) – L Gate (p) – Finish Gold
Fleet: Start – W – L Gate – W – L Gate – Finish

Silver Fleet: Start – W – L Gate – Finish
Silver Fleet: Start – W(p) – L Gate (p) - Fini

Course 2

America's Cup – 'Reaching Start and Finish'



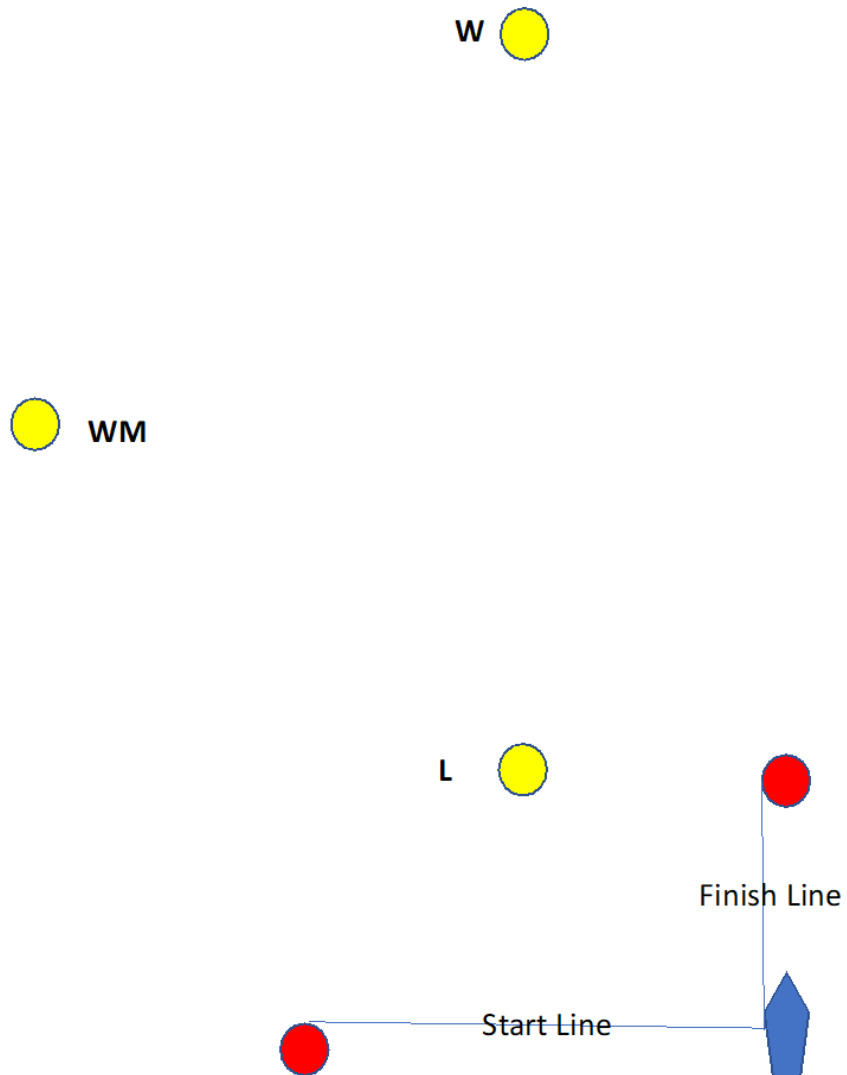
Gold Fleet:

Start - M1(p) - L Gate (p/s) - W(p) - L Gate (p/s) - W(p) - M1(p) - Finish.

Silver Fleet:

Start - M1(p) - L Gate (p/s) - W(p) - M1(p) - Finish.

Course 3



Gold Fleet: Start – W – WM – L – W – WM – L - Finish

Silver Fleet: Start – W – WM – L - Finish

