



Northland O'pen Cup
23-25 September 2023
The Organising Authority is
Bay of Islands Yacht Club
Venue

Pine Beach, Lake Taharoa, Kai Iwi Lakes

Lake Taharoa is the largest of the idyllic freshwater Kai Iwi Lakes, with beachfront camping and Skiff launching: an ideal regatta location for a family holiday. Kai Iwi Lakes is located 30 minutes Northwest of Dargaville.

NOTICE OF RACE

NB: The notation '[DP]' in a rule in the Sailing Instructions means that the penalty for a breach of that rule may, at the discretion of the protest committee, be less than disqualification.

1 RULES

- 1.1 The regatta will be governed by the rules as defined in *The Racing Rules of Sailing*. This includes the Class Rules of the IOSCA.
- 1.2 Yachting New Zealand Prescriptions 2021-2024 shall apply.
- 1.3 The Yachting New Zealand Safety Regulations Part 1 shall apply. In addition, all competitors shall wear water sports safety helmets whilst on the water.
- 1.4 Umpired Fleet Racing Appendix UF as approved by WS and adopted by the Class may apply under RRS 86.2. The Sailing Instructions will state if they apply.
- 1.5 If the Race Committee believe that the average wind speed is clearly over 12 knots across the course, they may signal in accordance with RRS Appendix P5 that pumping, rocking and ooching are permitted except on a windward leg. This changes rules RRS 42.2(a), RRS 42.2(b), RRS 42.2(c).

2 ADVERTISING

- 2.1** Boats may be required to display advertising chosen and supplied by the organising authority. [DP]

3 ELIGIBILITY AND ENTRY

- 3.1** The regatta is open to all boats of the O'pen Skiff class.
- 3.2** Each competitor shall be:
- (a) a financial member of a club recognised by the competitor's National authority; and
 - (b) a member of the New Zealand O'pen Skiff Association.
- 3.3** The event is open to all competitors under the age of 17 on the first date of the event. Boys and Girls compete in the same Divisions.
- 3.4** Eligible competitors may enter online at – www.openskiff.org.nz/whats-on. From 1st August 2023 Credit/Debit Card payment is required.
- 3.5** **The closing date for entries is 19th September 2023.**
Late entries may be accepted by the Organising Authority by contacting the Regatta organiser directly: Andy Child ajameschild@gmail.com.
- 3.6** All boats must use their designated O'pen Skiff Sail Number at the time of online registration.
- 3.7** A limited number of charter boats will be available. Please contact secretary@openskiff.org.nz for more information and pricing.

4 FEES

- 4.1** The entry fee is NZ\$60 and must be paid online at the time of entry.

5 SCHEDULE

5.1 Dates of racing:

Date	Time	Event
Day 1 Sat 23	1200	Arrival
	1300-1600	Pre-regatta coaching clinic (Gold/Silver & Development)
	1700	Welcome Drinks (provided)
Day 2 Sun 24	0800 - 1000	Registration
	1000	Welcome, Introductions & Briefing
	1100 - 1230	On Water Session 1 (Points Racing)
	1230 – 1330	Lunch ashore and Competitor Bonding
	1330 – 1500	On Water Session 2 (Points Racing & fun racing)
	1700	Dinner: Sailors free, family members \$5 each
Day 3 Mon 25	1000	Briefing
	1030 - 1230	On Water Session 3 (Points Racing)
	1230 – 1330	Lunch ashore and Competitor Bonding
	1330 – 1500	On Water Session 4 (Points Racing & fun racing)
		Prizegiving held as soon as possible after racing

- 5.2** The number of races for all divisions will be at the discretion of the Race Committee after consultation with the Class Representative and advised at the morning briefing. Depending on the number of entries the divisions may race as one fleet.
- 5.3** The scheduled time of the warning signal for the first race each day will be advised at the morning briefing.
- 5.4** Sunday **dinner** will be Nachos. Please send bookings via email to ajameschild@gmail.com by **17th September** & bring cash – sailors free, all others \$5 each.

6 MEASUREMENT

- 6.1** A boat shall comply with RRS 78.1 at all times while racing.
- 6.2** Equipment inspection: Spot Checks by Class Measurers may take place at any time during the regatta

7 SAILING INSTRUCTIONS

The sailing instructions will be available by the 20th September at www.openskiff.org/whats-on

8 VENUE

- 8.1** **Attachment 1** shows the regatta location.
- 8.2** **Attachment 2** shows the regatta venue.

9 THE COURSES

The courses to be sailed will be as follows:

9.1 For the Points Races a variety of courses may be used including Windward/Leeward, Triangular, Reaching, long race and a combination of these.

9.2 Special Courses will be used for non-points Races.

10 PENALTY SYSTEM

RRS 44.1 is changed so that the Two-Turns Penalty is replaced by the One-Turn Penalty for all Penalties except any Penalty signaled by an umpire, which shall be a Two-Turn Penalty.

11 SCORING

11.1 THREE (3) races are required to be completed to constitute a series.

11.2

- a) When fewer than five (5) races have been completed, a boat's series score will be the total of her race scores.
- b) When five (5) to seven (7) races have been completed, a boat's series score will be the total of her race scores excluding her worst score.
- c) When eight (8) or more races have been completed, a boat's series score will be the total of her race scores excluding her two worst scores.

11.3 Any Long Race shall be scored as half points.

12 SUPPORT BOATS

Support boats shall be deemed to be "Event Support Boats" and shall have an operative VHF radio and follow all instructions of the Race Officer. All support boats need to follow the rules and regulations for the Kai Iwi Lakes found [here](#).

13 PRIZES

Prizes may be given as follows:

Special Awards: Gold, Silver and Development
(In recognition of qualities such as sportsmanship, perseverance, assistance to others, positive attitude, improvement)

Gold Fleet: Overall: 1st, 2nd and 3rd +1st Girl

Silver Fleet (if sailed): 1st, 2nd and 3rd +1st Girl

Development Fleet (if sailed): 1st, 2nd and 3rd + 1st Girl

Other prizes may be awarded at the discretion of the race committee.

14 INSURANCE

Each participating boat shall be insured with valid third-party liability insurance with a minimum cover of NZ\$1,000,000 per event or the equivalent.

15 RISK STATEMENT

RRS 3 states: 'The responsibility for a boat's decision to participate in a race or to continue to race is hers alone.' By participating in this event each competitor agrees and acknowledges that sailing is a potentially dangerous activity with inherent risks. These risks include strong winds and rough seas, sudden changes in weather, failure of equipment, boat handling errors, poor seamanship by other boats, loss of balance on an unstable platform and fatigue resulting in increased risk of injury. **Inherent in the sport of sailing is the risk of permanent, catastrophic injury or death by drowning, trauma, hypothermia or other causes.**

16 DISCLAIMER OF LIABILITY

Competitors participate in the regatta entirely at their own risk. See RRS 3, Decision to Race. The organising authority will not accept any liability for material damage or personal injury or death sustained in conjunction with or prior to, during, or after the regatta.

17 FURTHER INFORMATION

Kai Iwi Lakes are unique freshwater dune lakes.

For further information please contact Andy Child, Regatta organiser:

ajameschild@gmail.com

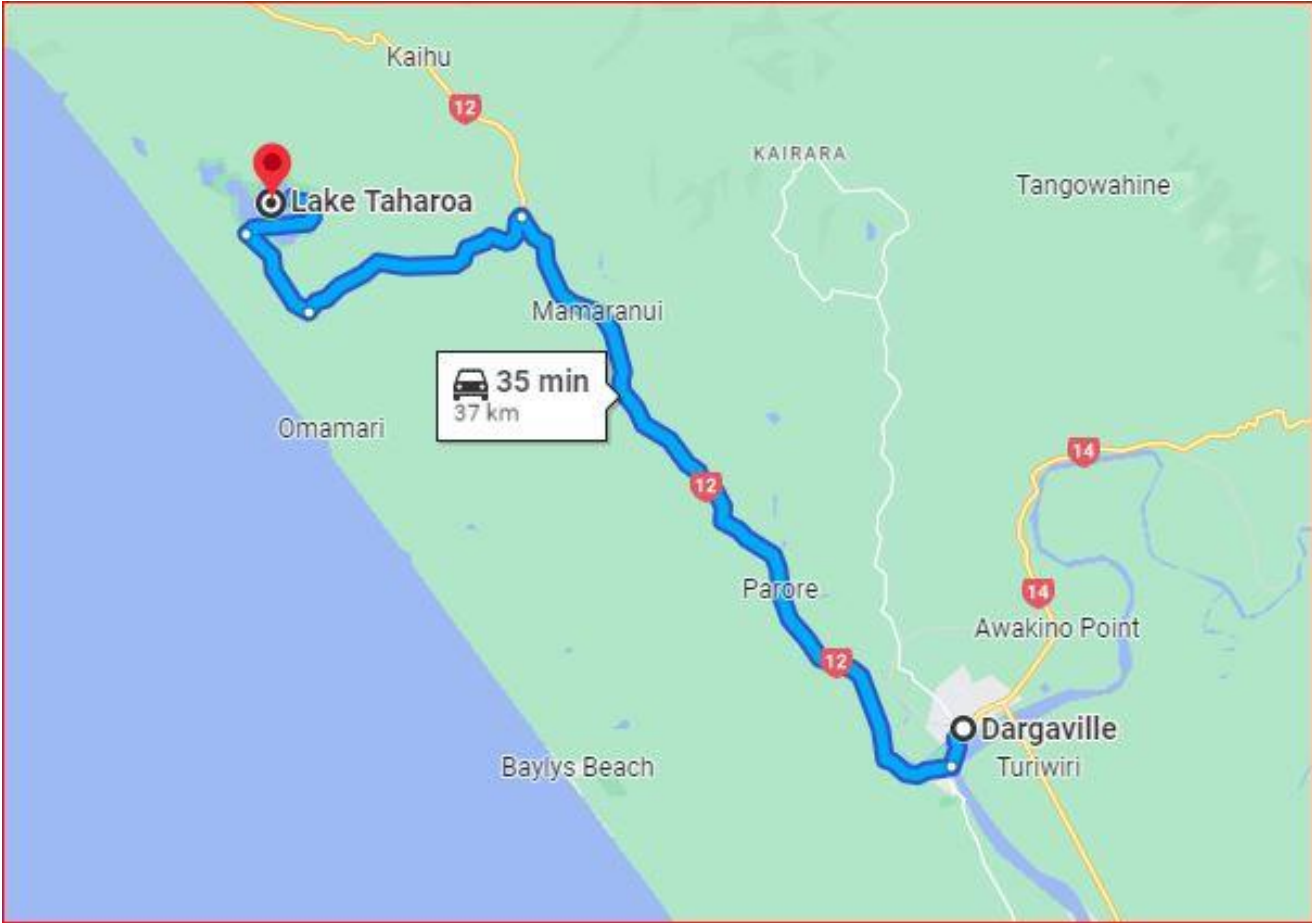
18 ACCOMODATION

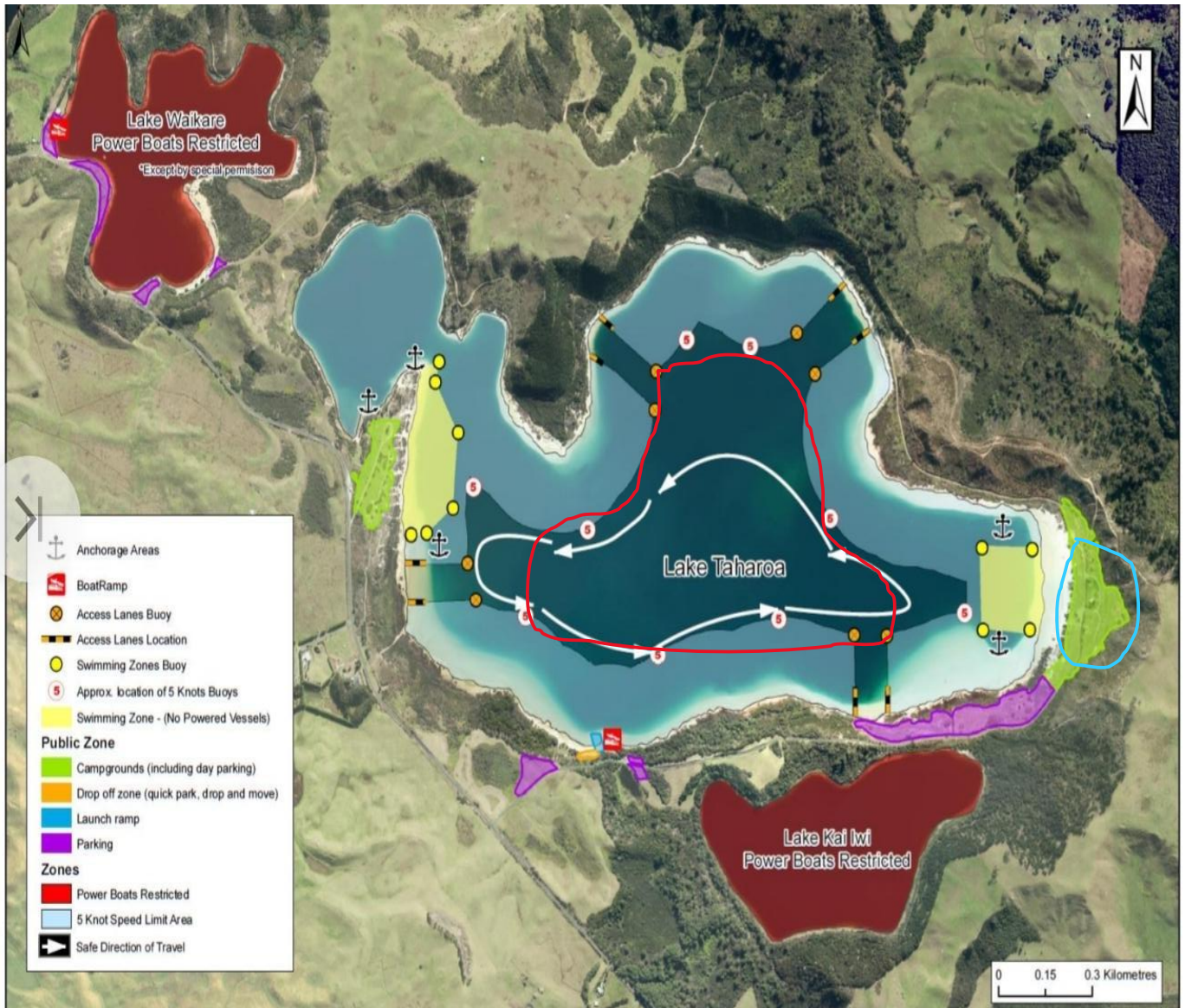
Accommodation at Kai Iwi is at the main Pine Beach campground in Taharoa Domain and will need to be booked as soon as possible to secure a spot. This can be done here <https://kaiwicamp.nz/campground/pine-beach>

Limited alternative offsite accommodation may be found at:

Wai Hou Oma Lodge: <https://www.waihouomalodge.co.nz/>

Kai Iwi Lakes Resort: <https://kaiwilakes.co.nz/>





Approximate Racing Area indicated in Red
Camping Area in Blue