



2023 O'pen Skiff and RS Feva South Island Championships

November 17th - 19th 2023

Organising Authority

Wanaka Yacht Club, Lakeside Road, Wānaka, NZ 9305

Notice of Race

NB: The notation '[DP]' in a rule in the Notice of Race means that the penalty for a breach of that rule may, at the discretion of the protest committee, be less than disqualification. The notation '[NP]' in a rule means that a boat may not protest another boat for breaking that rule. This changes RRS 60.1(a).

1. RULES

- 1.1 The event is governed by the rules as defined in *The Racing Rules of Sailing (RRS)*.
- 1.2 The Yachting New Zealand Safety Regulations Part 1 shall apply.
- 1.3 O'pen Skiff and RS Feva class rules will apply.
- 1.4 RRS 44.1 is changed so that the Two-Turns Penalty is replaced by the One-Turn Penalty.
- 1.5 RRS Appendix T, Arbitration will apply.

2. SAILING INSTRUCTIONS

2.1 The sailing instructions will consist of the instructions in RRS Appendix S, Standard Sailing Instructions, and Supplementary Sailing Instructions that will be on the official notice board located at <https://wanakayachtclub.co.nz/2023-Open-skiff-rs-feva/> . A copy of the Supplementary Sailing Instructions will be posted on the WYC Notice board. No printed copies will be available.

2.2 [DP] While racing, from the first warning signal until the end of the last race of the day, except in an emergency, a boat shall not make voice or data transmissions and shall not receive voice or data communication that is not available to all boats.

3. ELIGIBILITY AND ENTRY

3.1 The event is open to O'pen Skiff and RS Feva yachts.

3.2 The event is open to all competitors under the age of 17 on the first date of the event. Boys and Girls compete in the same Divisions.

3.3 Eligible boats may enter by completing the entry form and submitting it, together with the required fee. Entry process available at [O'pen Skiff and RS Feva Entry](#) or www.O'penskiff.org.nz/whats-on. A Debit or Credit card will be required to complete entry.

3.4 To be eligible to compete in this event each skipper shall be a financial member of a club recognised by the competitor's national authority and be a member of the New Zealand O'pen Skiff Association or the RS Feva Association.

4. FEES

4.1 Entry fee is \$75.00

4.2 Entry fee for O'pen Skiff Green Fleet is \$50.

4.3 The closing date for entries is 14th November 2023. Late entries may be accepted by the Organising Authority.

5. ADVERTISING

5.1 Boats may be required to display advertising chosen and supplied by the organizing authority.

6. SCHEDULE

6.1 Activity	Date	From	To
<i>Coaching Clinics and Fun Day</i>	<i>17th Nov</i>	<i>1000</i>	<i>1600</i>
<i>Registration</i>	<i>17th Nov</i>	<i>1000</i>	<i>1600</i>
<i>Briefing</i>	<i>18th Nov</i>	<i>0900</i>	<i>0930</i>

6.2 Dates of racing:

Date	Number of Races	First Warning Signal
<i>18th Nov</i>	<i>Up to 4 races scheduled</i>	<i>1025</i>
<i>19th Feb</i>	<i>Up to 3 races scheduled</i>	<i>1025</i>

6.3 A maximum of 7 races will be sailed. Target duration time for races is up to 40 minutes. Number of races on any given day may be varied by Sailing Instructions.

6.4 On the last scheduled day of racing no warning signal will be made after 1400

7. N/A

8. VENUE

8.1 NoR Addendum A shows the plan of the event venue.

8.2 NoR Addendum B shows the location of the racing areas.

9. COURSES

9.1 The courses will be as per RRS Appendix S, Standard Sailing Instructions - Windward/Leeward with gate or Triangle/Windward Leeward.

10. SCORING

10.1 Four races are required to be completed to constitute a series.

10.2 (a) When fewer than 6 races have been completed, a boat's series score will be the total of her race scores.

(b) When 6 or more races have been completed, a boat's series score will be the total of her race scores excluding her worst score.

11. SUPPORT PERSON VESSELS

11.1 [DP] All support person vessels shall always have an engine safety cut out switch (kill cord) attached to the driver while the engine is running, unless prior written exemption has been provided by the Organising Authority.

11.2 [DP] All support boats shall comply with local bylaws at all times. Note 5 knot permanent speed restriction areas between the marina and Eely Point.

12. CHARTERED OR LOANED BOATS

12.1 A chartered or loaned boat may carry national letters or a sail number in contravention of her class rules, provided that the race committee has approved her sail identification before the first race. Chartered boats may be available from WYC – contact Roger North (learn@wanakayachtclub.co.nz) for more details.

13. RISK STATEMENT

13.1 RRS 3 states: 'The responsibility for a boat's decision to participate in a race or to continue to race is hers alone.' By participating in this event each competitor agrees and acknowledges that sailing is a potentially dangerous activity with inherent risks. These risks include strong winds and rough seas, sudden changes in weather, failure of equipment, boat handling errors, poor seamanship by other boats, loss of balance on an unstable platform and fatigue resulting in increased risk of injury. Inherent in the sport of sailing is the risk of permanent, catastrophic injury or death by drowning, trauma, hypothermia or other causes.

14. INSURANCE

14.1 It is recommended that each participating boat be insured with valid third-party liability insurance with a minimum cover of \$1,000,000 per incident or the equivalent.

15. PRIZES

15.1 Prize Giving will be held after racing on the 19th November 2023

15.2 Prizes will be awarded as follows:

Trophies for O'pen Skiff Fleet

- 1st Girl / 1st Boy Gold
- 1st Girl / 1st Boy Silver
- 1st Girl / 1st Boy Development

Medals/Lanyards for O'pen Skiff Fleet

1st, 2nd, 3rd (plus 1st Girl - orange lanyards) for Gold, Silver and Development Fleet

Trophies / Prizes for RS Feva Fleet to be advised

16. RIGHTS TO USE NAME AND LIKENESS

16.1 By participating in the event, a competitor automatically grants to the Organising Authority and the sponsors of the event, the right in perpetuity, to make, use and show, from time to time and at their discretion, any motion pictures, still pictures and live, taped or film television and other reproductions of him/her during the period of the event in which the competitor participated and, in all material, related to the said event without compensation.

17. USE OF DRONE FOR MEDIA

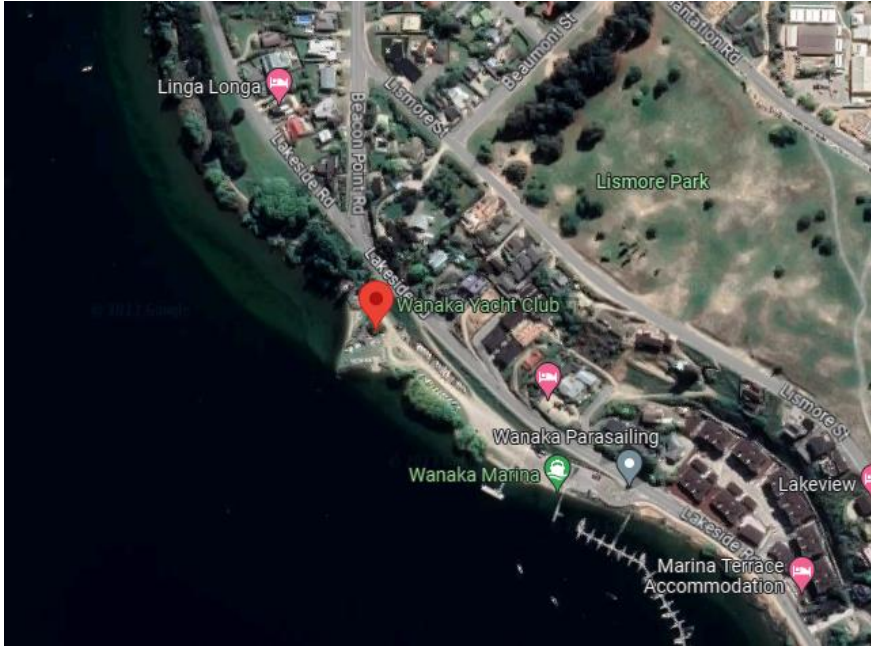
17.1 All those who take part in the race as competitors as well as support crew agree to be overflown by a drone during the duration of the event, this includes your person and your property.

18. FURTHER INFORMATION

18.1 For further information please contact: Roger North (learn@wanakayachtclub.co.nz)

APPENDUM A

VENUE: Wanaka Yacht Club, Riverside Drive , Wanaka



APPENDUM B Racing Area

Lake Wanaka within boundaries below

